

Trace-It Warehouse Management Systems

Production to Warehouse

- Used to move finished product to warehouse and makes it available in Sellable Inventory

Transfer/Slotting

- Used to move pallets of Finished Goods or Raw Material from one storage location to another

Hold

- Allows user to place a pallet on quality hold

Processing Sales Orders

- Load staged shipping pallets into the assigned truck
- Completing the procedure with printing of paperwork and transfers the data back to the ERP (*if connected to ERP*)

Receiving Raw Materials

- This procedure verifies the actual count of the received items and allows for directed putaway

Assign to Production

- Transfers raw material to production and relieves raw material inventory both in TRACE-IT and ERP (*if connected to ERP*)

Damage

- Allows for removal of containers from an inventoried pallet. This procedure will adjust the pallet inventory

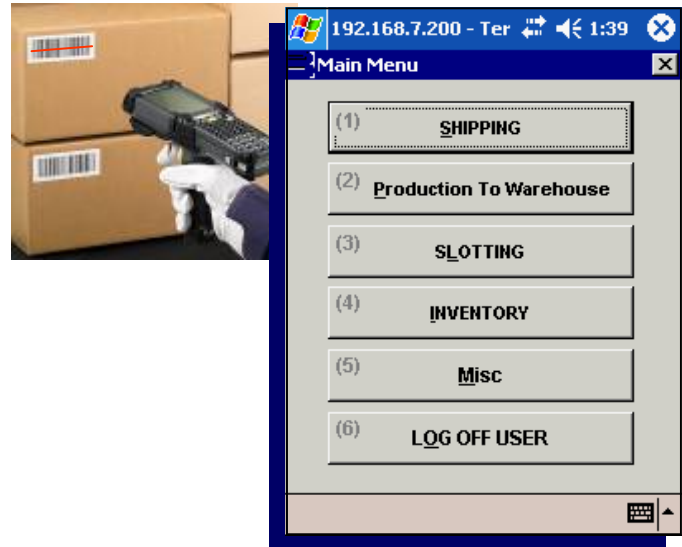
Void

- This function voids finished product pallet labels that have not been inventoried

Return

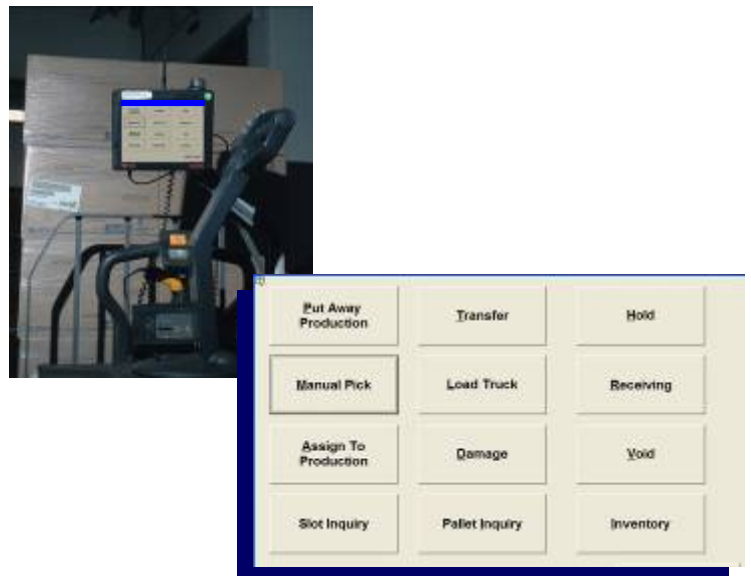
- This function returns the finished product pallet labels from orders or and then back to the plant for rework

Option 1 Wireless Scanner



Main Menu
Wireless Scanner (Mobile PC)

Option 2 Fork Lift/Truck Mount Program



Main Menu
Fork Lift/Truck Mount